

Are you the Revenue's next target?



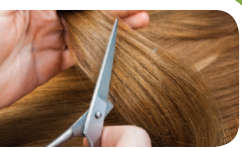
A doctor was subjected to enquiry for over a year. Over £7,000 of fees were incurred in refuting the Revenue's allegations.



A property developer was subjected to a Corporation Tax enquiry. Professional costs exceeded £13,400.



This enquiry focused on investment income. It cost £3,600 to prove that the client's tax return was 100% accurate.



A hairdresser was successfully defended and HMRC's demands were ultimately reduced by almost £80,000! The accountancy fees were in excess of £6,500.



A pub was the subject of an enquiry where the Revenue were suggesting that over £80,000 had been omitted from the accounts. Defence fees amounted to over £6,000.



This capital gains enquiry followed the gift of a property to the client's children. Costs to conclude were circa £10,000.

Business Legal Helpline

Subscribing to the tax investigations package gives you 24-hour, 365 days a year unlimited access to a business legal helpline.

Have you ever felt frustrated that you don't have the internal resources to respond to a business need or issue?

The team of qualified barristers, solicitors and legal experts offer advice covering all aspects of employment, health & safety and business legal matters including:

- Debtor issues
- Disciplinary matters
- Contractual disputes
- Small claims court procedures
- Dealing with complaint letters (asserting rights)
- Dealing with statutory demands
- Litigation
- Property disputes

Please contact RDP Newmans for further information on how we can help you.

T: 020 8357 2727

www.rdpnewmans.com enquiries@rdpnewmans.com

RDP Newmans is the trading name of RDP Newmans LLP. Registered to carry on audit work in the UK and Ireland, and regulated for a range of investment business activities by The Institute of Chartered Accountants in England and Wales.

It's time to get protected!



Tax Investigations are not always forecast!

Get Tax Investigation Protection Today!

Get Tax Investigation Protection Today!



Think you're
safe from the
taxman?

With HMRC committed to reaching its target of recovering £27 billion, and with 46% of its staff dedicated to enforcement and compliance, we believe that compliance activity is one of the biggest threats facing you over the next few years.

Regardless of the accuracy of your tax return, Tax Inspectors can randomly investigate any UK business or personal tax client and you must co-operate with the enquiry.

- The costs of a Tax Investigation can seriously impact your business or personal financial security.
- Only an expert and professional defence will ensure your tax affairs are treated correctly.

Subscribing to our Tax Investigations Service today is the only way to have complete peace of mind that if the Taxman comes calling, you will be able to defend yourself without worrying about costly fees.

What might a tax enquiry cost?

Due to their technical nature, a professional defence can easily cost £5,000 or more in order to deal with HMRC's enquiries.

Over £1bn has been collected so far from campaigns focused on doctors, plumbers, electricians, landlords and online traders. HMRC have also subjected smaller businesses including painters and decorators, driving instructors, taxi drivers and pharmacists to benchmarking.

What are the benefits of the Tax Investigations Service?

The annual subscription fee to our Tax Investigations

Service enables us to:

- Provide full professional representation in the event of a tax or VAT enquiry
- Deal with the tax authorities on your behalf
- Handle all correspondence and attend meetings with the tax inspector
- Negotiate the best possible result for you.



For the small annual fee,
you'll benefit from complete
peace of mind that you're
fully protected.



HMRC's key objective has changed to maximise the amount of revenue it can collect from taxpayers. Indeed, over the next 12 months, HMRC is aiming to collect an additional £27 billion in revenue for the Treasury.

Any UK taxpayer can be selected at random for an investigation.

Expert professional advice is essential in order to deal with the highly-trained tax inspectors and ensure the best possible result for you.

It can take thousands of pounds in professional fees to prove your innocence – unexpected costs which are unwanted and unnecessary.